



Chemical Plant Liquidation Texas, USA



Columns

Item #	Dia x Length	Material	Shell PSI @ Temp	MFG
<u>110876</u>	2'0" x 56'4"	Hastelloy C/316LSS	50FV @ 350	Letco
<u>110877</u>	1'0" x 29'0"	316L SS	50 @ 150	Allied Fab & Welding
<u>110878</u>	1'6" x 15'0"	316L SS	100FV @ 300	Ward Tank

Glass Lined Reactors

Item #	Gallons	Dia x Length	S. PSI @ Temp	J. PSI @ Temp	Shell Material	Jacket Material
<u>110882</u>	6,000	9'0" x 11'2"	90FV @ 450	100FV @ 350	9115 Glass	CS
<u>110880</u>	4,000	8'6" x 9'0"	90FV @ 500	100FV @ 350	3009 Glass	CS
<u>110881</u>	4,000	8'6" x 9'0"	100FV @ 500	90FV @ 500	Glass Lined	CS
<u>110879</u>	3,000	8'6" x 6'6"	100FV @ 500	90FV @ 500	3009 Glass	CS
<u>110884</u>	3,000	8'6" x 6'6"	100FV @ 500	90 @ 500	Glass Lined	CS

Alloy Reactors

Item #	Gallons	Dia x Length	S. PSI @ Temp	J. PSI @ Temp	Shell Material	Jacket Material
<u>110889</u>	6,000	10'0" x 10'0"	90 @ 150	100 @ 338	316L SS	304L SS
<u>110887</u>	6,000	10'0" x 15'10"	45 @ 300	100 @ 338	316L SS	304L SS
<u>110891</u>	6,000	10'0" x 18'0"	50FV @ 350	100 @ 350	304LLM SS	316L SS
<u>110886</u>	4,000	9'0" x 8'0"	40 @ 350	200 @ 387	316L SS	304L SS
<u>110890</u>	3,000	7'6" x 8'0"	90 @ 150	100 @ 338	316L SS	304L SS
<u>110892</u>	3,000	7'6" x 8'0"	90 @ 150	100 @ 338	316L SS	304L SS
<u>110893</u>	3,000	7'6" x 8'0"	90 @ 150	100 @ 338	316L SS	304L SS
<u>110894</u>	3,000	7'0" x 10'0"	90FV @ 350	100FV @ 350	304LLM SS	316L SS
<u>110888</u>	2,000	6'6" x 7'3"	90 @ 200	100 @ 338	316L SS	304L SS

Louisiana Chemical Equipment Co, LLC
sales@LCEC.com www.LCEC.com
(281) 471-4900



Chemical Plant Liquidation Texas, USA



Nutsche Filters

Item #	Capacity	Size	Material: Vessel/Jacket/Plate	Discharge	MFG.
111003	6 Sq. Meters	8'6" x 7'0"	316L SS/304L SS 304L SS/316L SS/CS	Bottom	Rosenmund
111004	10 Sq. Meters	12'0" x 7'10"	304LLM SS/316L SS/304LLM SS	Side	Rosenmund
111005	10 Sq. Meters	12'0" x 7'10"	316L SS/304L SS/ 304L SS/316 SS	Side	Rosenmund

Blender

Item #	Capacity	Material	Bottom Drive	MFG
111006	2.2 m2	304L SS	5 HP, 1800 RPM, 460 Volts	Engelsmann

Centrifuge

Item #	Dia x Length	Type	Material	Model	MFG
111008	48" X 30"	Perforated Basket	316L SS	ETS-1250K20DFRH	Robatel

Cooling Towers

Item #	Capacity	Material	Model	MFG
111011	750 Tons	Fiberglass	TTMT-288-319	Tower Tech
111012	750 Tons	Fiberglass	TTMT-288-319	Tower Tech

Dryer

Item #	Size	Type	Capacity	Shell Material	MFG
111006	24" Wide x 12'0" Long	Vibrating Fluidized Bed Dryer with Bag House	2.2 m2	304L SS	Witte



Louisiana Chemical Equipment Co, LLC
sales@LCEC.com www.LCEC.com
(281) 471-4900



Chemical Plant Liquidation Texas, USA



Vessels/Tanks

Item #	Gallons	Dia x Length	PSI @ Temp	Material	Top/Bottom Heads
<u>110905</u>	15,000	10'6" x 25'6"	50FV @ 350	304LLM SS	Dished/Dished
<u>110953</u>	11,000	10'0" x 18'6"	ATM @ 250	CS	Flat
<u>110910</u>	10,000	10'0" x 16'0"	50FV @ 300	316L SS	Dished/Dished
<u>110925</u>	10,000	12'0" x 12'0"	CS	FV @ 110	Dished/Dished
<u>110954</u>	10,000	10'0" x 16'1"	30FV @ 300	Glass Lined	Dished/Dished
<u>110957</u>	10,000	12'0" x 12'0"	ATM @ 110	CS	Dome/Flat
<u>110959</u>	10,000	10'0" x 16'0"	76 @ 300	316L SS	Dished/Dished
<u>110960</u>	10,000	10'0" x 16'0"	76 @ 300	CS	Dished/Dished
<u>110961</u>	10,000	10'0" x 16'0"	FV @ 110	FRP (Derakane 470-45)	Dome/Flat
<u>110923</u>	10,000	10'0" x 16'0"	FV @ 300	CS	Dome/Flat
<u>110951</u>	10,000	12'0" x 12'0"	FV @ 110	CS	Dome/Flat
<u>110902</u>	6,000	10'0" x 11'0"	ATM @ 160	316L SS	Dome/Flat
<u>110904</u>	6,000	8'0" x 16'0"	50FV @ 326	304LLM SS	Dished/Dished
<u>110918</u>	6,000	10'0" x 10'0"	45 @ 150	316L SS	Dished/Dished
<u>110952</u>	6,000	10'0" x 11'0"	FV @ 100	CS	Dome/Flat
<u>110933</u>	5,000	9'6" x 7'6"	90FV @ 350	304LLM SS	Dished/Dished
<u>110898</u>	4,000	9'0" x 8'0"	45 @ 326	316L SS	Dished/Dished
<u>110899</u>	4,000	9'0" x 8'0"	45 @ 226	316L SS	Dished/Dished
<u>110900</u>	4,000	7'6" x 11'6"	40 @ 250	316L SS	Dished/Dished
<u>110906</u>	4,000	7'6" x 11'6"	40FV @ 250	Hastelloy C	Dished/Dished
<u>110908</u>	4,000	8'0" x 10'0"	40 @ 180	316L SS	Dished/Dished
<u>110919</u>	4,000	9'0" x 8'0"	45 @ 150	316L SS	Dished/Dished
<u>110924</u>	4,000	8'0" x 10'0"	CS	40 @ 100	Dished/Dished
<u>110926</u>	4,000	9'0" x 8'0"	45FV @ 300	316L SS	Dished/Dished
<u>110927</u>	4,000	4'0" x 7'0"	45FV @ 300	316L SS	Dished/Dished

Louisiana Chemical Equipment Co, LLC
sales@LCEC.com www.LCEC.com
(281) 471-4900



Chemical Plant Liquidation Texas, USA



Vessels/Tanks

Item #	Gallons	Dia x Length	PSI @ Temp	Material	Top/Bottom Heads
110920	3,000	7'6" x 8'0"	45FV @ 150	316L SS	Dished/Dished
110921	3,000	7'6" x 8'0"	45FV @ 150	316L SS	Dished/Dished
110922	3,000	7'6" x 8'0"	45FV @ 150	316L SS	Dished/Dished
110923	3,000	7'6" x 8'0"	45FV @ 150	316L SS	Dished/Dished
110903	3,000	7'6" x 8'0"	40 @ 180	316 SS	Dished/Dished
110940	2,000	6'6" x 7'4"	50FV @ 300	304LLM SS	Dished/Dished
110931	1,500	8'0" x 4'0"	60FV @ 370	316L SS	Dished/Dished
110932	1,500	8'0" x 4'0"	40FV @ 300	316L SS	Dished/Dished
110937	750	3'6" x 9'3"	90 @ 250	CS	Dished/Dished
110896	610	4'0" x 7'0"	ATM	SS	Cone/Flat
110897	610	4'0" x 7'0"	ATM	SS	Cone/Flat
110938	500	4'0" x 5'0"	60 @ 110	CS	Dished/Dished
110934	500	4'0" x 4'8"	50FV @ 300	CS	Dished/Dished
110942	500	4'0" x 5'0"	60 @ 110	CS	Dished/Dished
110913	400	4'0" x 4'0"	ATM @ 140	FRP (Derakane 470)	Dished/Dished
110915	400	4'0" x 4'0"	ATM @ 140	FRP (Derakane 470)	Dished/Dished
110916	400	4'0" x 4'0"	ATM @ 140	FRP (Derakane 470)	Dished/Dished
110907	300	3'0" x 5'6"	55FV @ 300	316L SS	Dished/Dished
110911	300	3'0" x 5'3"	90 @ 150	304 SS	Dished/Dished
110912	300	3'0" x 5'8"	90 @ 150	316L SS	Dished/Dished
110936	200	3'0" x 4'0"	55 @ 220	316L SS	Dished/Dished
110945	200	2'6" x 5'0"	50FV @ 350	CS	Dished/Dished
110947	200	2'6" x 5'0"	50FV @ 350	CS	Dished/Dished
110941	100	2'0" x 5'0"	90 @ 200	316L SS	Dished/Dished
110946	100	2'6" x 2'8"	50FV @ 350	CS	Dished/Dished
110914	100	2'0" x 4'8"	ATM @ 180	316 SS	Dished/Dished
110948	30	1'0" x 3'0"	45 @ 250	FRP (Derakane-470)	Dished/Dished

Louisiana Chemical Equipment Co, LLC
sales@LCEC.com www.LCEC.com
(281) 471-4900



Chemical Plant Liquidation Texas, USA



Exchangers

Item #	Sq. Ft.	Material: Shell/Tubes/Heads	S. PSI Temp	T. PSI Temp
110978	1,243	316L SS/316L SS/CS	50 @ 300	100 @ 150
110971	388	CS/316L SS/316L SS	65 @ 250	100 @ 250
110974	320	316L SS/316L SS/CS	100 @ 200	100 @ 150
110998	289	CS/316L SS/316L SS	100FV @ 450	100FV @ 350
110967	192	CS/Hastelloy C-22/Hastelloy C-22	100FV @ 428	100FV @ 428
110965	153	CS/Hastelloy C/ Hastelloy C	200FV @ 400	50FV @ 400
110993	141	CS/316L SS/316L SS	100FV @ 450	100FV @ 350
110982	94	CS/316L SS/316L SS	100 @ 150	100 @ 250
110977	60	CS/316L SS/316L SS	100 @ 150	100 @ 250
110981	60	CS/316L SS/316L SS	100FV @ 450	100FV @ 350
110990	60	CS/316L SS/316L SS	100FV @ 350	100FV @ 450
110970	50	CS/316L SS/316L SS	75 @ 50	100 @ 250
110972	50	CS/316L SS/316L SS	75 @ 50	100 @ 250
110973	50	CS/316L SS	75 @ 50	100 @ 250
110975	50	CS/316L SS/316L SS	75 @ 30	100 @ 250
110979	50	CS/316L SS/316L SS	75 @ 200	100 @ 250
111002	48	CS/316L SS/316L SS	100FV @ 450	100FV @ 350
110995	47	316L SS/316L SS/CS	30FV @ 375	100 @ 375
110980	36	CS/316L SS/316L SS	100FV @ 450	100FV @ 350
110986	31	CS/316L SS/316L SS	100FV @ 450	100FV @ 350
110992	30	CS/316L SS/316L SS	100FV @ 450	100FV @ 350

Louisiana Chemical Equipment Co, LLC
sales@LCEC.com www.LCEC.com
(281) 471-4900

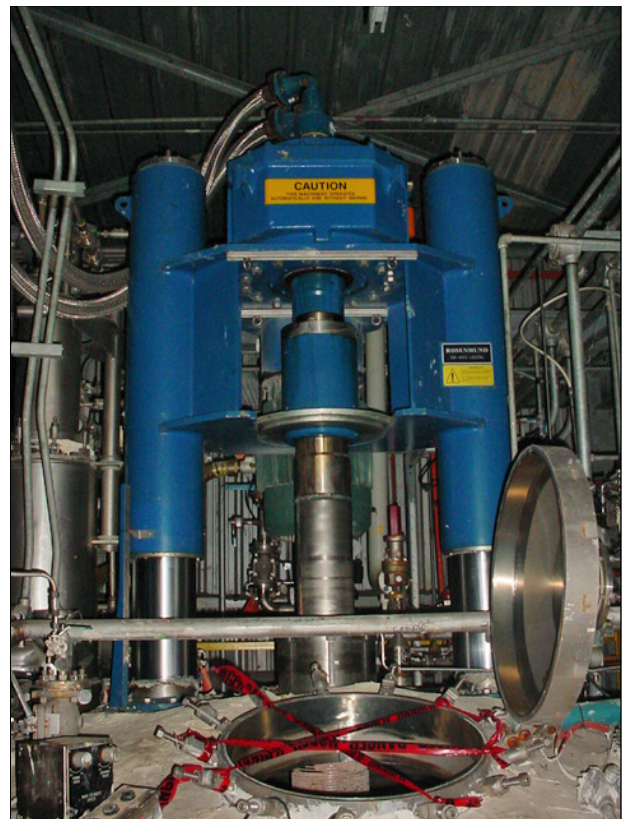


Chemical Plant Liquidation Texas, USA



Exchangers

Item #	Sq. Ft.	Material: Shell/Tubes/Heads	S. PSI Temp	T. PSI Temp
<u>110997</u>	22	316L SS/316L SS/CS	30FV @ 375	100 @ 375
<u>110985</u>	22	CS/316L SS	150FV @ 200	50FV @ 200
<u>110994</u>	21	CS/316L SS/CS	30FV @ 375	100 @ 375
<u>110996</u>	21	316L SS/316L SS/CS	30FV @ 375	100 @ 375
<u>111000</u>	21	CS/316L SS/CS	30FV @ 375	100 @ 375
<u>110987</u>	18	CS/316L SS/316L SS	100FV @ 450	100FV @ 350



Louisiana Chemical Equipment Co, LLC
sales@LCEC.com www.LCEC.com
(281) 471-4900